

ASE

Vision Committee Meeting

August 26, 2019

Agenda

- I. Debrief Airline Panel Discussion
- II. Review of Working Group Assignments
 - A. Airport Experience Working Group
 - B. Technical Working Group
 - C. Focus Group
 - D. Community Character Working Group
- III. Next Steps and Vision Committee Role
- IV. Adjourn



Airline Panel Debrief

What are your key takeaways from the airline panel?

Airport Experience Working Group

Based on our values, our goal of limited enplanement growth, and our goal to reduce CO2 and other emissions, what would a *warm, welcoming and comfortable* terminal look like?

- How could it best “fit” the community?
- What are our terminal and landside options?
- How could our building size, function, number of gates, etc. best reflect our values, planning directions and goals?

Technical Working Group

To meet our community values and goals, what is our desired “design aircraft?”

- How could the existing or future “fleet mix” meet the air pollution reduction, limited enplanement growth, and noise abatement goals established by the ASE Vision process?
- In light of those community goals, what does the future air field look like in terms of safety and airport design?
- What are the implications of the status quo (VSA Airport Design Group II VSA Airport Design Group DIII)? Could any variations exist within these design groups that might help us attain our community goals? What should be the commercial Design Aircraft for Aspen given what aircraft are currently available and known future aircraft? For the desired Design Aircraft, does the airfield need to be ADG II or ADG III?

Focus Group

How can we improve airport connectivity?

- What would more convenient and easy ground transportation to and from the airport look like?
- How can we enhance multi-modal transportation options and create seamless connectivity to transit?
- How does the Airport fit into the broader surface transportation network of Aspen, Snowmass Village, Pitkin County and the Roaring Fork Valley?

Community Character Working Group

What's the big-picture role of the Airport in our Community?

- How will our future Airport fit the ASE Vision values and the civic goals of the Aspen/Pitkin County community?
- How should these values and goals inform planning for future operations of both General Aviation and Commercial service?

Vision Committee

Understand working group deliberations.

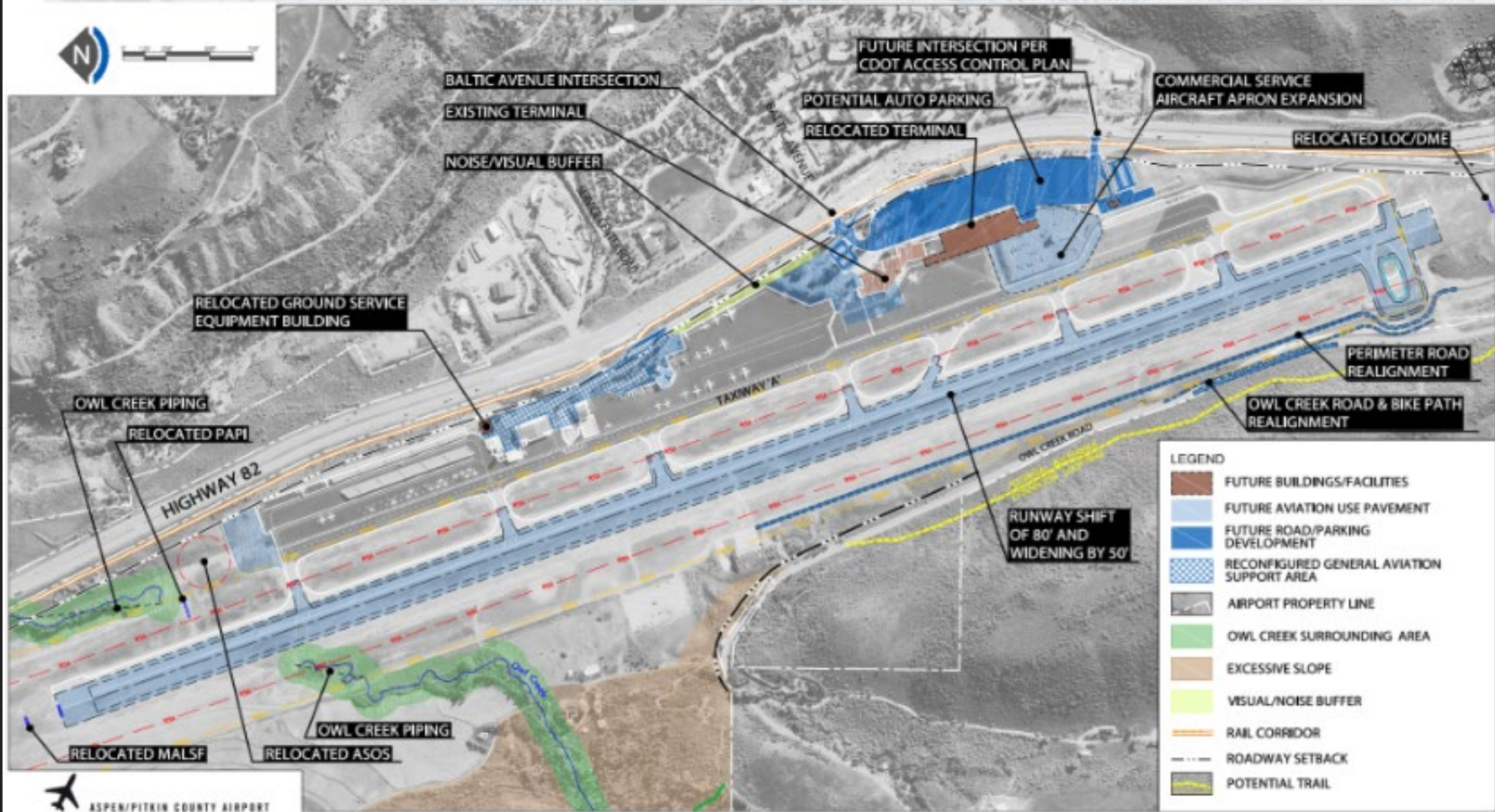
- Attend working group meetings to observe working group conversations.

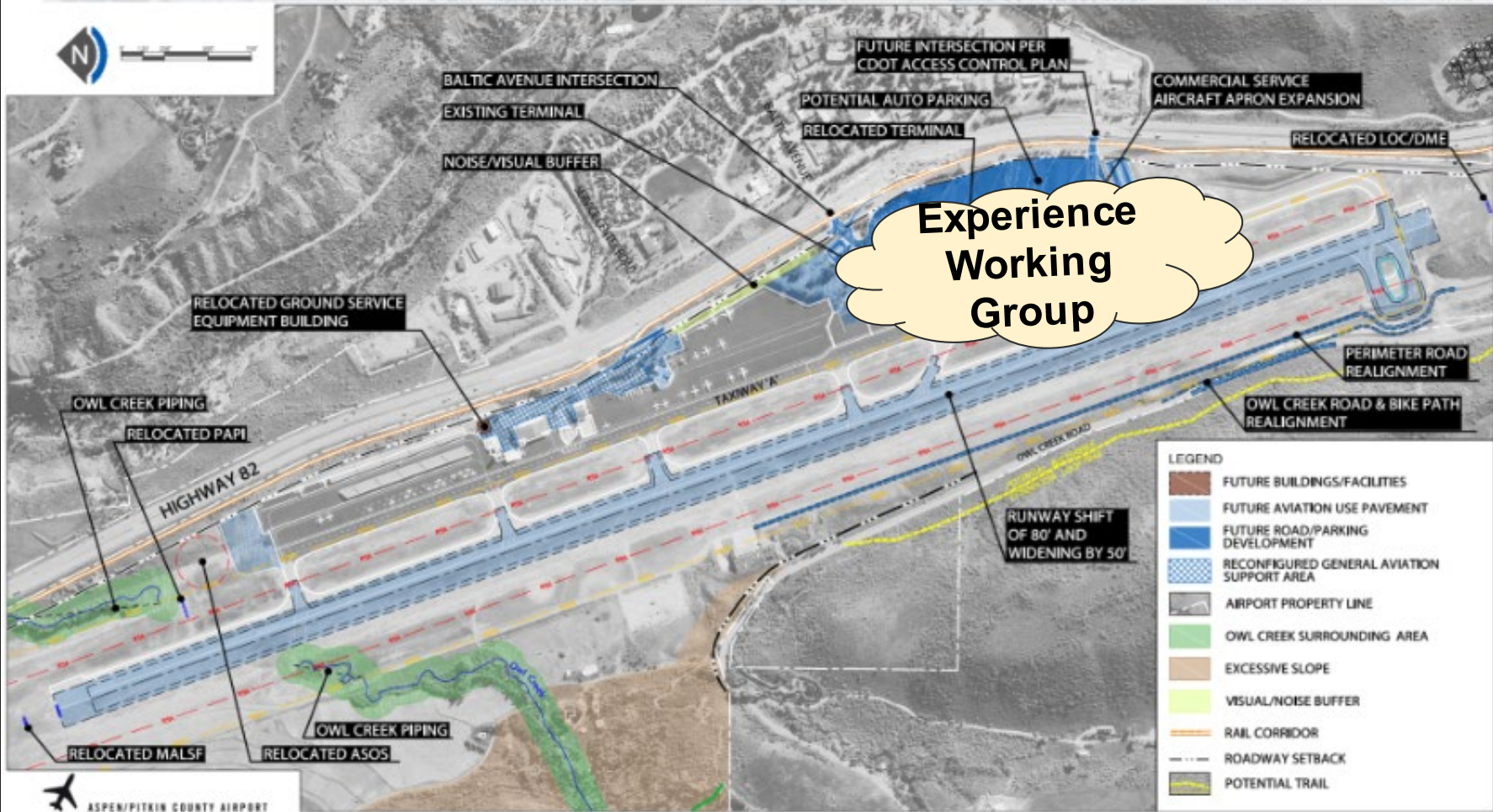
All Working Groups and Vision Committee

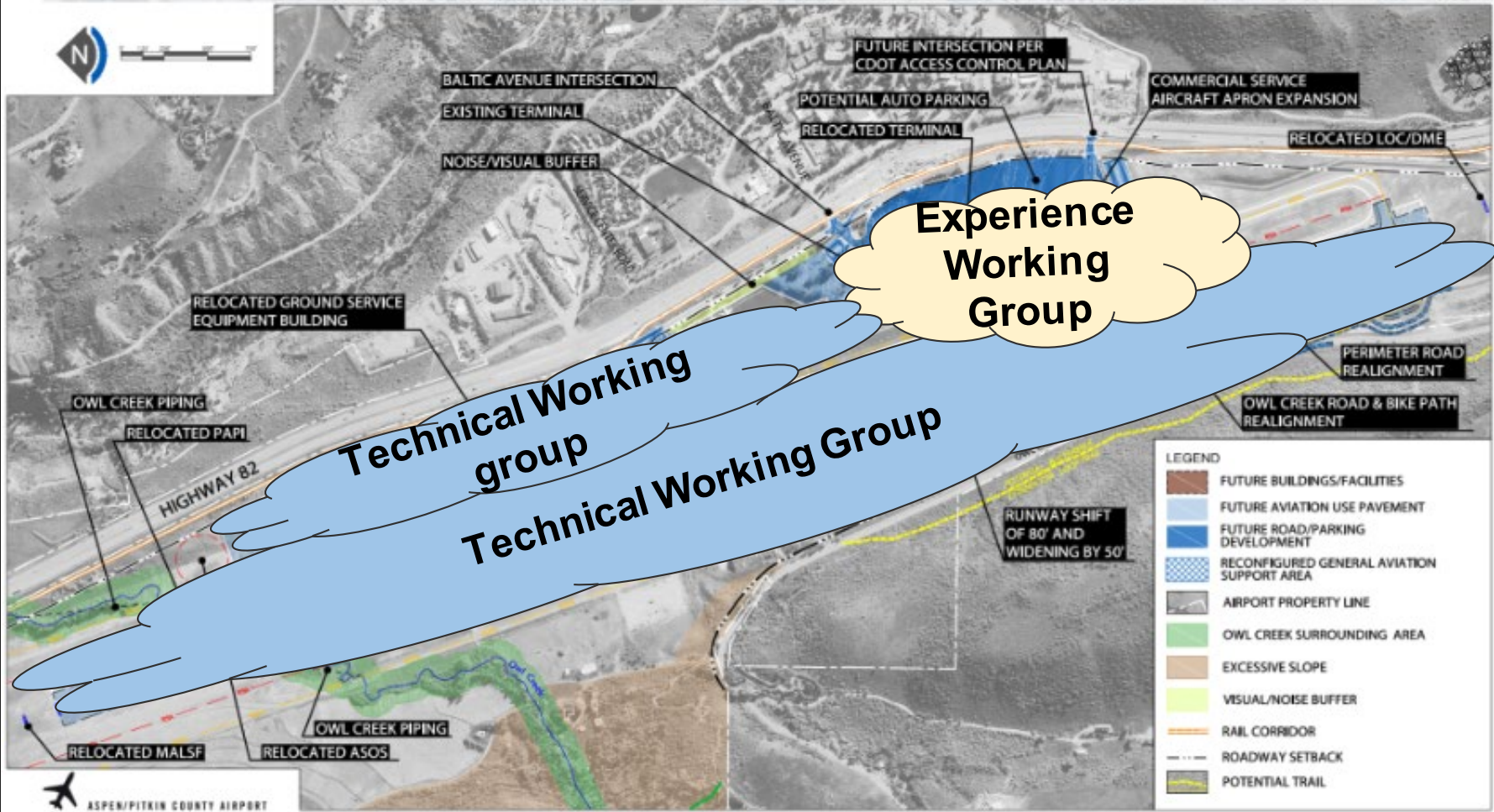
- How does the FAA approved forecast and design standards relate to our community values and determining future improvements at the airport?
- What can we afford? (Note: this is at the vision level, not detailed financial assessment)

ASE COMMUNITY VALUES SUMMARY

- Safety in the Air and on the Ground
- Adaptable, Flexible, Future-Proof
- Environmental Responsibility
- Community Character – Reflect local culture and values
- Economic Vitality
- Warm and Welcoming
- Design Excellence
- Efficiency – an airport that works well
- Preserve High Quality of Life
- Convenient and Easy Ground Transportation

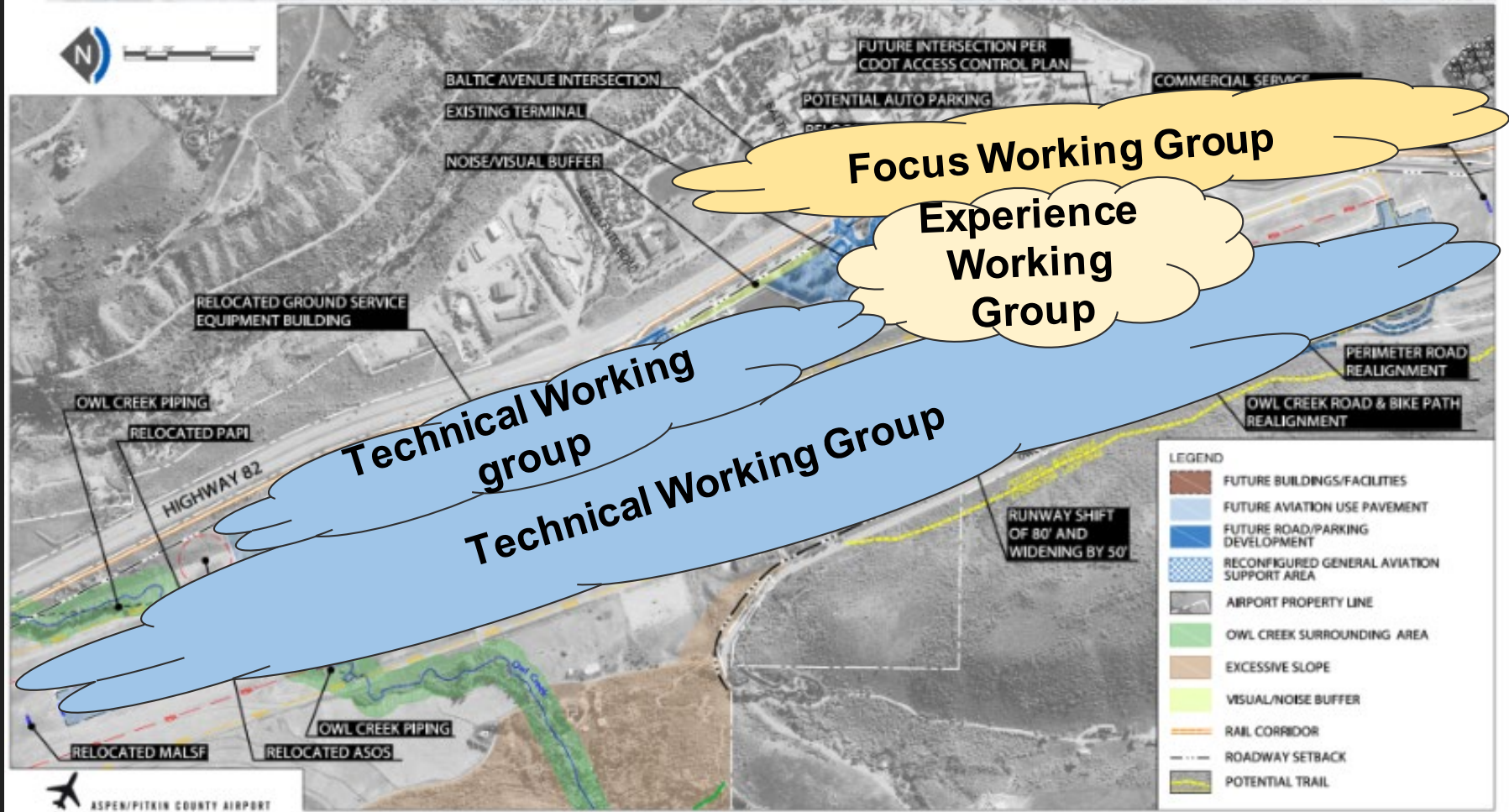






EA Proposed Projects

Figure 1-1 Proposed Projects



LEGEND

	FUTURE BUILDINGS/FACILITIES
	FUTURE AVIATION USE PAVEMENT
	FUTURE ROAD/PARKING DEVELOPMENT
	RECONFIGURED GENERAL AVIATION SUPPORT AREA
	AIRPORT PROPERTY LINE
	OWL CREEK SURROUNDING AREA
	EXCESSIVE SLOPE
	VISUAL/NOISE BUFFER
	RAIL CORRIDOR
	ROADWAY SETBACK
	POTENTIAL TRAIL



EA Proposed Projects

Figure 1-1 Proposed Projects



BALTIC AVENUE INTERSECTION
EXISTING TERMINAL

FUTURE INTERSECTION PER
CDOT ACCESS CONTROL PLAN

POTENTIAL AUTO PARKING

COMMERCIAL SERVICE



Community Character

Focus Working Group

Experience Working Group

Technical Working group

Technical Working Group

PERIMETER ROAD REALIGNMENT

OWL CREEK ROAD & BIKE PATH REALIGNMENT

OWL CREEK PIPING

RELOCATED PAPI

HIGHWAY 82

RUNWAY SHIFT OF 80' AND WIDENING BY 50'

RELOCATED MALSF

OWL CREEK PIPING

RELOCATED ASOS

LEGEND

- FUTURE BUILDINGS/FACILITIES
- FUTURE AVIATION USE PAVEMENT
- FUTURE ROAD/PARKING DEVELOPMENT
- RECONFIGURED GENERAL AVIATION SUPPORT AREA
- AIRPORT PROPERTY LINE
- OWL CREEK SURROUNDING AREA
- EXCESSIVE SLOPE
- VISUAL/NOISE BUFFER
- RAIL CORRIDOR
- ROADWAY SETBACK
- POTENTIAL TRAIL



EA Proposed Projects

Figure 1-1 Proposed Projects



BALTIC AVENUE INTERSECTION

FUTURE INTERSECTION PER CDOT ACCESS CONTROL PLAN

COMMERCIAL SERVICE

POTENTIAL AUTO PARKING



Community Character

Focus Working Group

Experience Working Group

Technical Working group

Technical Working Group

Vision Committee

OWL CREEK PIPING

RELOCATED PAPI

HIGHWAY 82

PERIMETER ROAD REALIGNMENT

OWL CREEK ROAD & BIKE PATH REALIGNMENT

RUNWAY SHIFT OF 80' AND WIDENING BY 50'

LEGEND

- FUTURE BUILDINGS/FACILITIES
- FUTURE AVIATION USE PAVEMENT
- FUTURE ROAD/PARKING DEVELOPMENT
- RECONFIGURED GENERAL AVIATION SUPPORT AREA
- AIRPORT PROPERTY LINE
- OWL CREEK SURROUNDING AREA
- EXCESSIVE SLOPE
- VISUAL/NOISE BUFFER
- RAIL CORRIDOR
- ROADWAY SETBACK
- POTENTIAL TRAIL

RELOCATED MALSF

OWL CREEK PIPING

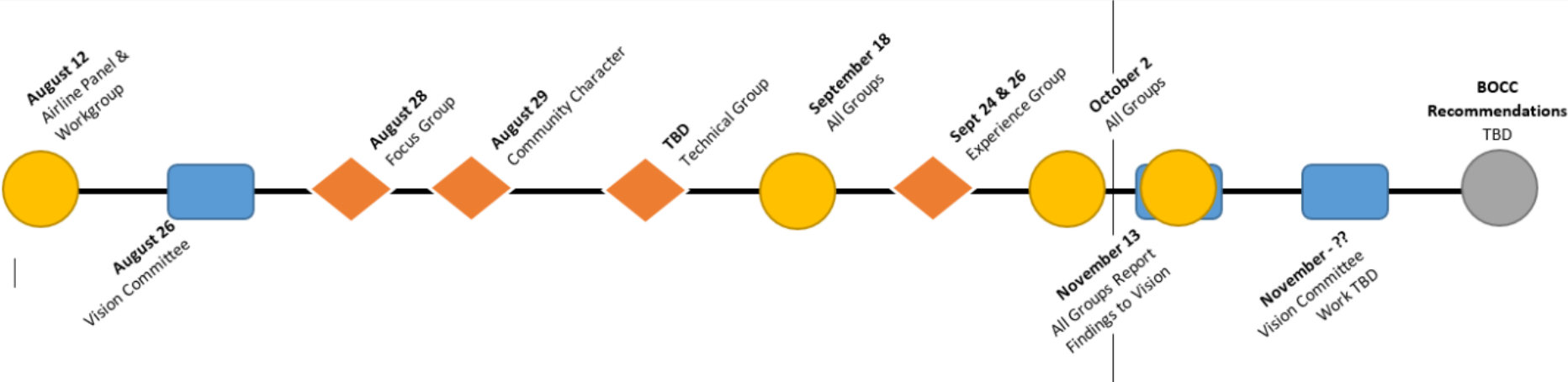
RELOCATED ASOS



EA Proposed Projects

Figure 1-1 Proposed Projects

Next Steps



Thank you!