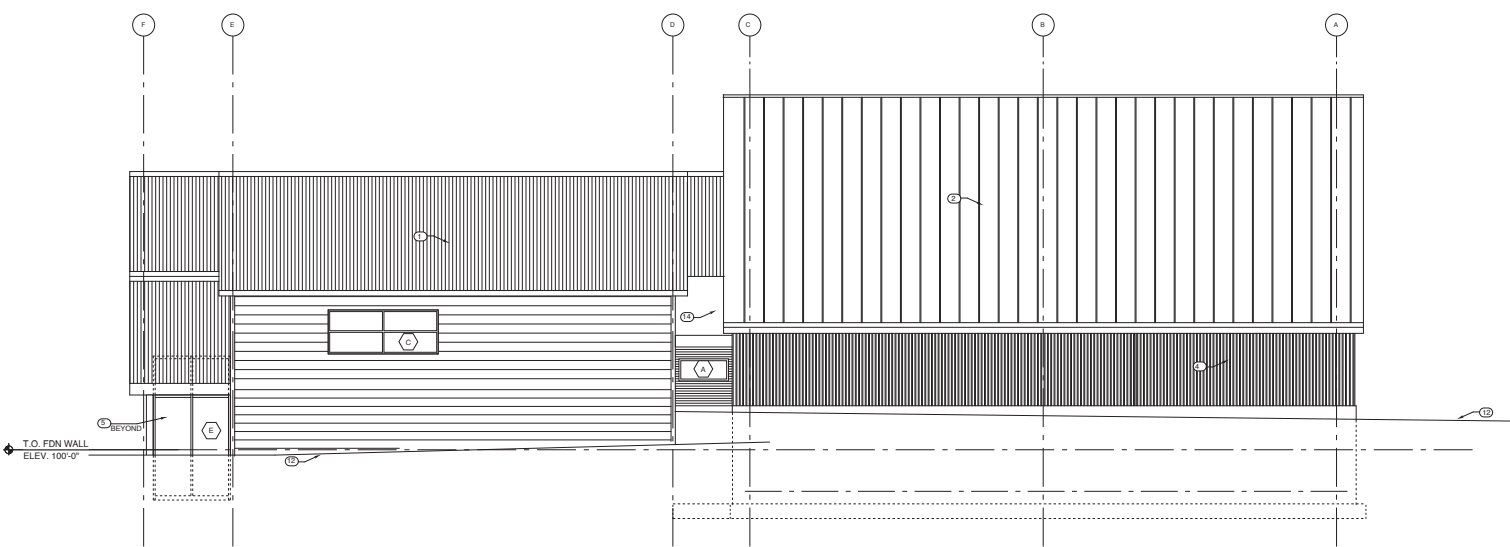


1 East Elevation
1/4" = 1'-0"



3 North Elevation
1/4" = 1'-0"

- GENERAL NOTES
- A. SEE SHEET A5.1 FOR TYPICAL CONSTRUCTION ASSEMBLIES.
 - B. ROUGH OPENINGS FOR INTERIOR DOORS ADJACENT TO CORNERS SHALL BEGIN 3 INCHES FROM INSIDE OF CORNER, U.N.O.
 - C. INTERIOR DOORS ARE IDENTIFIED BY THE NUMBER OF THE ROOM THEY SERVE. MULTIPLE DOORS SERVING A SINGLE ROOM ARE SHOWN BY "1-CR" OR "1-D" AS NECESSARY.
 - D. F.O. STUD = F.O. SLAB @ TYP. EXTERIOR WALL.
 - E. CEILING HEIGHTS SHOWN ARE HEIGHT ABOVE FIRST FLOOR SLAB (100'-0").
 - F. CONTRACTOR TO COORDINATE WITH FIRE DISTRICT VENDORS FOR INSTALLATION REQUIREMENTS OF COMMUNICATION EQUIPMENT. VERIFY REQUIRED OPENINGS, ROOF AND WALL PENETRATIONS, CONDUIT LOCATION AND SIZES AND CLEARANCES PRIOR TO CONSTRUCTION.
 - G. REFER TO SHEETS A7.X FOR INTERIOR ELEVATIONS & CASEWORK REFERENCES.

- Keynotes (This Sheet Only)
1. (X) Metal Roof
 2. New Metal Roofing over New Metal Building: Standing Seam, Vertical Leg, Superlok (MBCI).
 3. (X) Cementitious Lap Siding (PAINT)
 4. New Metal Siding over Metal Building: Masterline 16 (MBCI).
 5. Aluminum Storefront (Typical)
 6. (N) Cementitious Lab Siding to infill walls (PAINT)
 7. New Foundation Under New Entry 100
 8. New Siding to Match Existing
 9. (X) Overhead Garage Doors to Remain. No changes to these doors.
 10. Top of Concrete Wall in Apparatus Bay
 11. Approximate Line of Existing Grade
 12. Approximate Line of Finished Grade
 13. Steel Tube Frame with Metal Roofing
 14. TPO Membrane Roof (EPDM ALT.)
 15. Existing Foundation (Assumed)



A4

A4 ARCHITECTS LLC
242 NORTH SEVENTH STREET
CARBONDALE COLORADO 81423
703.633.6762
www.a4arc.com
ma@a4arc.com

Consultant

Professional Stamp

Carbondale & Rural Fire Protection District



Owner

Marble Station #83
300 West Park Street
Marble, Colorado
81623

Project

Issue Stamp

Date	Issued For
21 Oct 19	100% Schematic Design
11 Feb 19	SD/VE #3
11 Feb 19	SD/VE #4
1/2020	25% CD

NEW Elevations

A 3.1